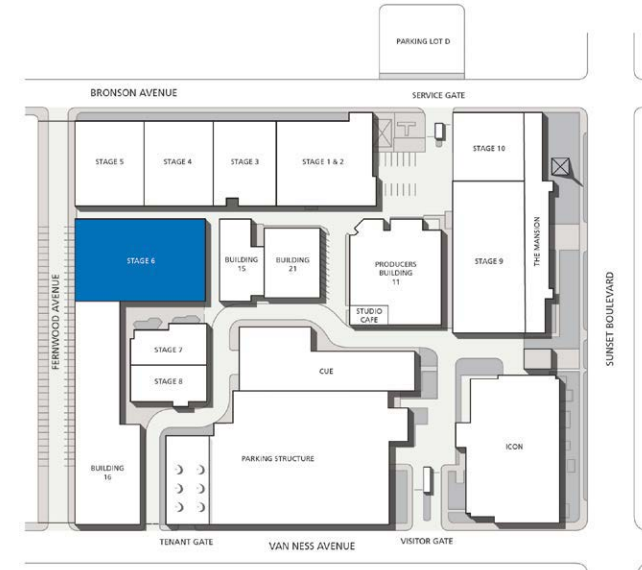
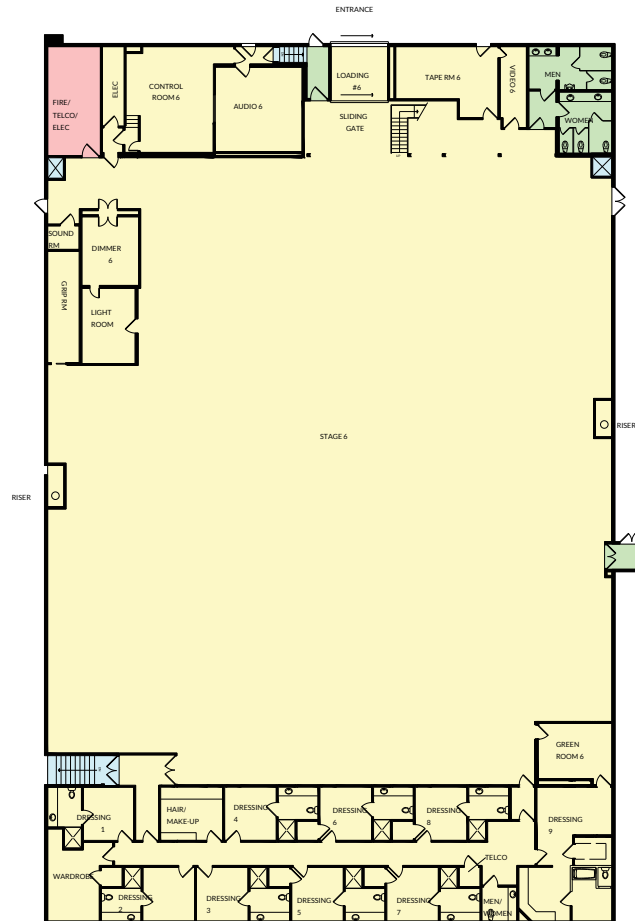
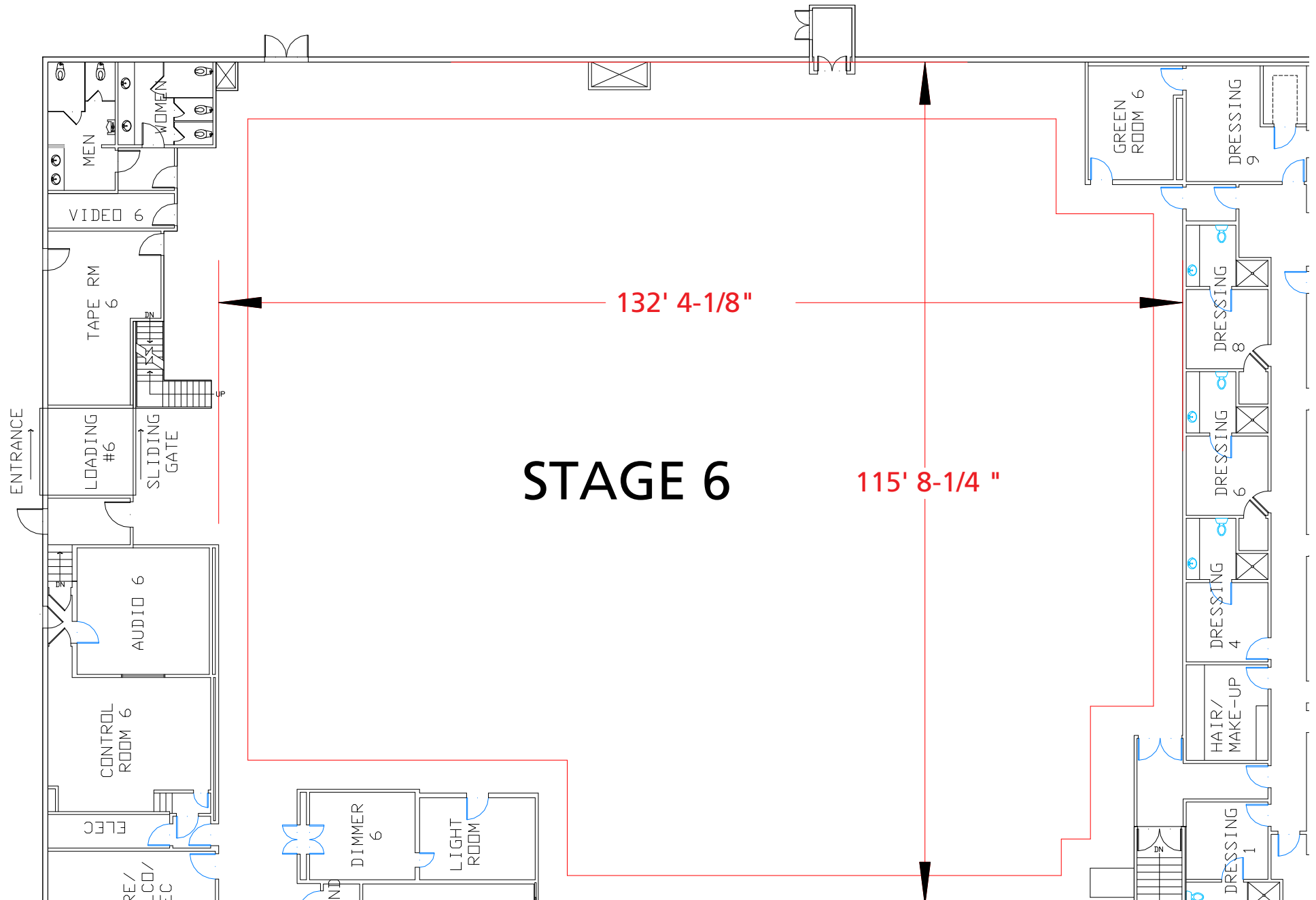


Stage 6



Width	Length	Height (Perms)	Total Stage Square Footage	Floor Type	Door (WxH)
115' 8 1/4"	132' 4 1/8"	30'	21,865	Wood	12' x 14'10"



Stage Specifications: Stage 6

Stage Specifications - (Dimensions Include 4' Fire Lane)

Width – 115' 8 1/4"
Length – 132' 4 1/8"
Height (Perms) – 30'
Total Square Footage – 21,865
Floor Type – Wood
Elephant Door (W X H) – 11' 10" X 17' 10"
Full Service Control Room Available On Stage

Support Space- (Available On Stage)

Offices – 3
Dressing Rooms – 9
Make Up Rooms – 1
Wardrobe – 1
Greenrooms – 1
Galley - 1

Heavy Equipment

Stage Management to authorize

Electric Service

Production Power - 120/208 800 Amp Per Phase Bus Bar, 2400 Amp Total Standard. Additional 10,000 Amps Available
240 Volts - No
480 Volts - No
Tech Power - Available
Power In Grid - Available (Single Phase 120/208)
Infrastructure For Generator Backup

HVAC

HVAC - (6) 20 Ton (Nominal) Cooling Only Package Units.
Redlight Control - Yes
Ventilation - No
Heating - Yes

Stage Extras

Hose Bib - Yes
Gas - Yes; Compressed Air - No
Drain - No
Wireless Internet – Yes; Phone – Yes; Fax – No