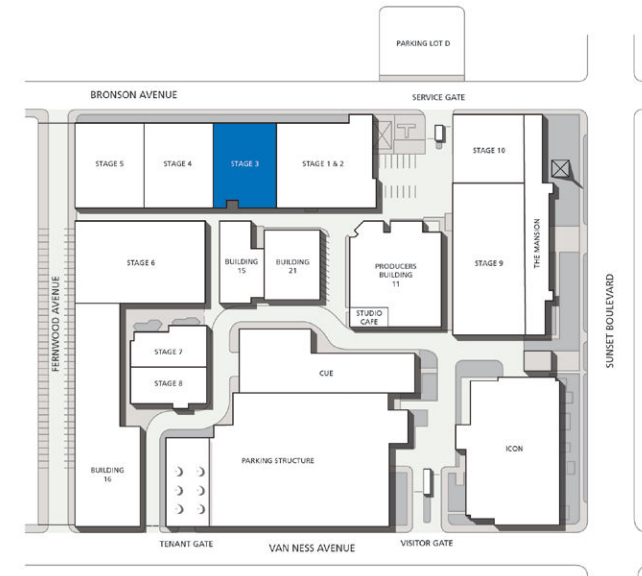
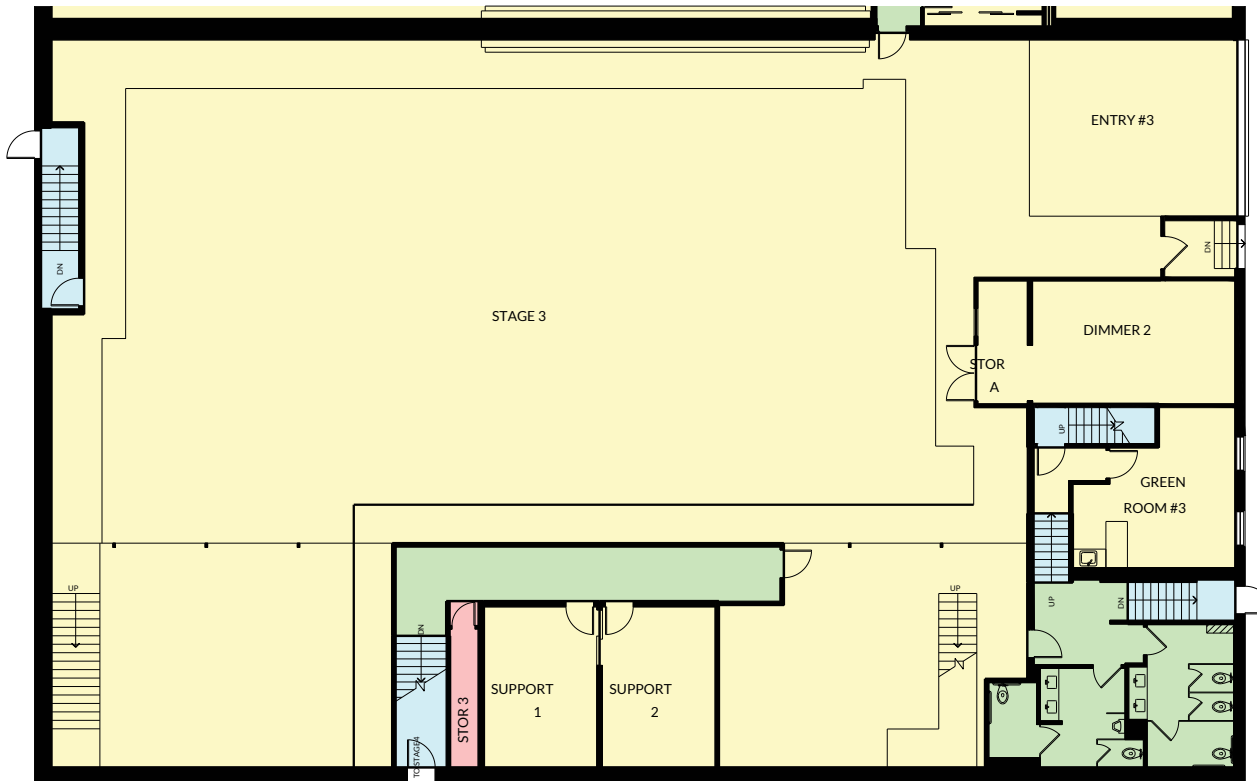
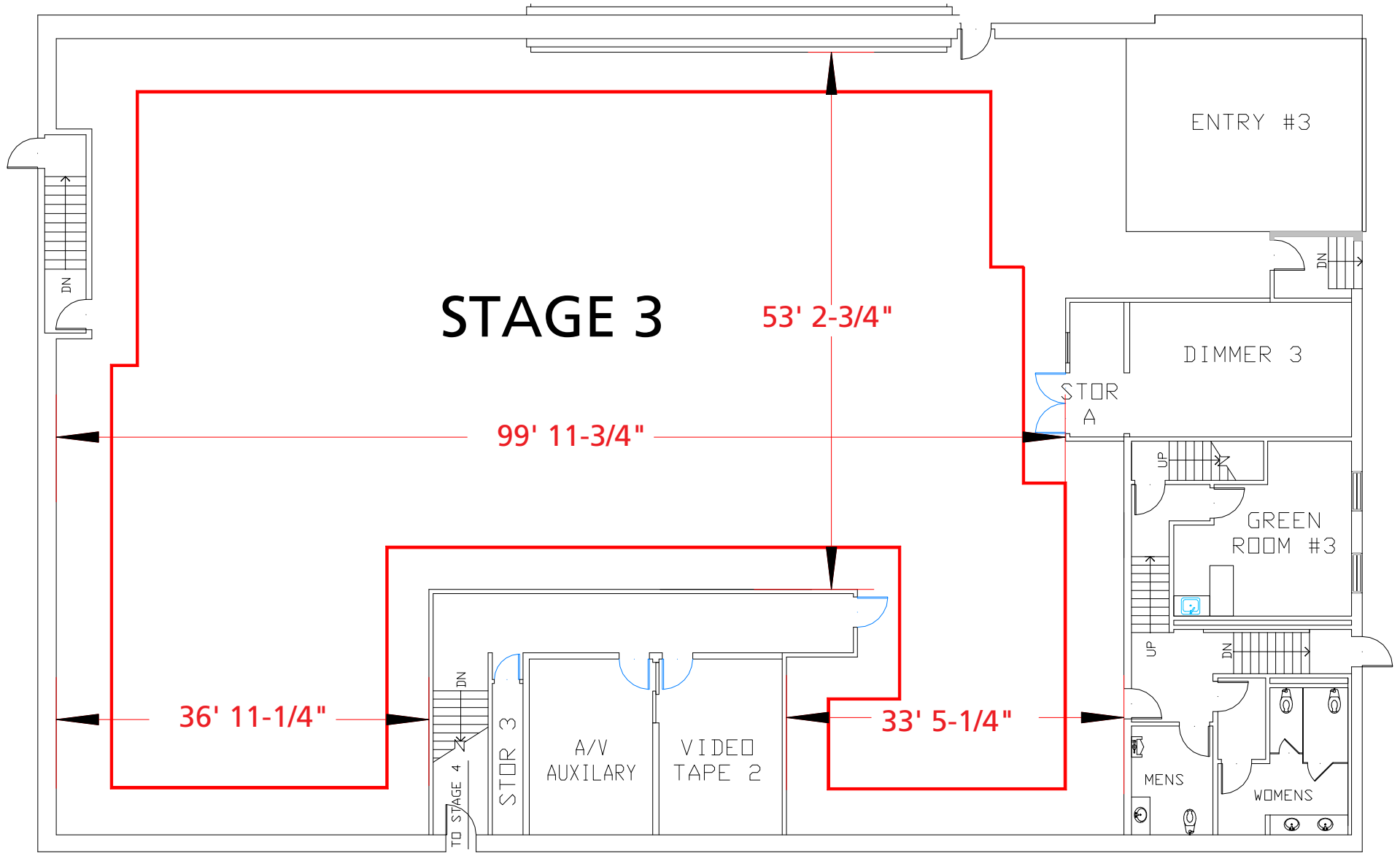


# Stage 3



Width	Length	Height (Perms)	Total Stage Square Footage	Floor Type	Door (WxH)
53' 2 3/4"	99' 11 3/4"	30'	8,668	Wood	17'8" x 17'7"



# Stage Specifications: Stage 3

## Stage Specifications - (Dimensions include 4' Fire Lane)

Width – 53' 2 3/4"  
Length – 99' 11 3/4"  
Height (Perms) – 30'  
Total Square Footage – 8,668 sf  
Floor Type – Wood  
Elephant Door (W X H) – 17' 8" X 17' 7"  
Full Service Control / Audio / Video Tape Room Available

## Support Space- (Available On Stage)

Offices - 2  
Dressing Rooms - 8  
Make Up Rooms - 1  
Wardrobe - 1  
Greenrooms – 1 (2 Additional Upon Availability)  
Galley - 0

## Heavy Equipment

Stage Management to authorize

## Electric Service

Production Power - 120/208 800 Amp Per Phase Bus Bar, 2400 Amp Total Standard. Additional 7200 Amps Available  
240 Volts - Accessible  
480 Volts - Accessible  
Tech Power - No  
Power In Grid - Available (Single Phase 120/208)

## HVAC

HVAC - (3) 20 Ton (Nominal) Cooling Only Package Units.  
Redlight Control - Yes  
Ventilation - No  
Heating – Yes

## Stage Extras

Hose Bib - Yes  
Gas - Yes; Compressed Air – No  
Drain - Yes  
Wireless Internet – Yes ; Phone – Yes ; Fax – No