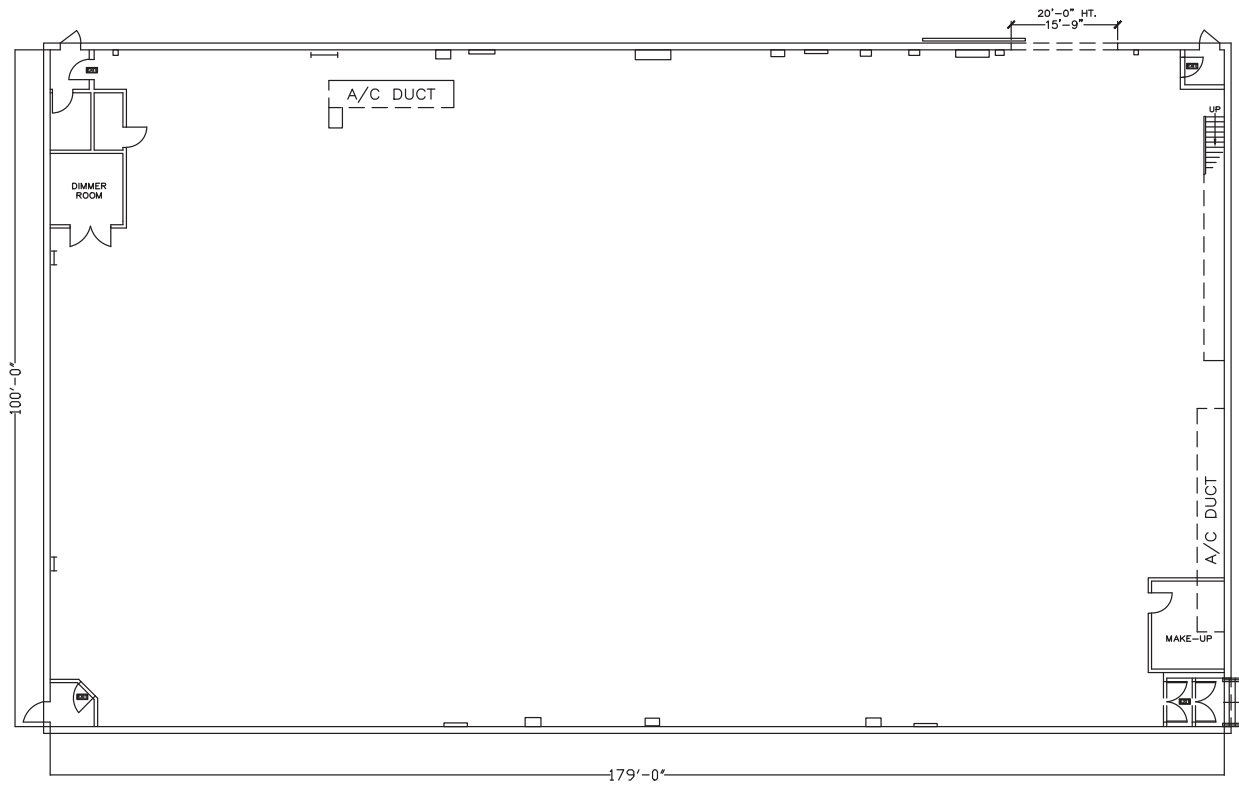


## Stage 4



Width	Length	Height (Perms)	Total Stage Square Footage	Floor Type	Door (WxH)
101'	174'	35'	18,562	Wood	15'3" X 20'

# Stage Specifications: Stage 4

---



## Stage Specifications

Width – 101'  
Length – 174'  
Height (Perms) – 35'  
Total Square Footage – 18,562 SF  
Floor – Raised wood  
Elephant Door (W X H) – 15'3" X 20'

## Additional Info

Audience Rated – 250 + crew of 49; A2 rating  
Drive-In – Yes  
Cat Walks – Yes

## Support Space

Control Room Connectivity – Yes; SMPTE fiber & audio break-outs/tech power  
Kitchen on stage with fridge, stove  
Dressing Rooms, Wardrobe, and Hair + Make Up rooms are available in adjacent buildings

## Heavy Equipment

Stage Management to authorize

## Electric Service

Production Power – 2- Switched Buss Bars 120/208 V @ 3 phase 800 amps per phase 4800 amps total  
240 Volts – No  
480 Volts – No  
Tech Power – Available

## HVAC

160 tons  
Redlight Control – Yes  
Ventilation – Yes  
Heating – Yes

## Stage Extras

Hose Bib – Yes  
Gas – Yes  
Drain – No  
Compressed Air – Yes  
Wireless Internet – Available  
Phone – Available  
Fax – Available