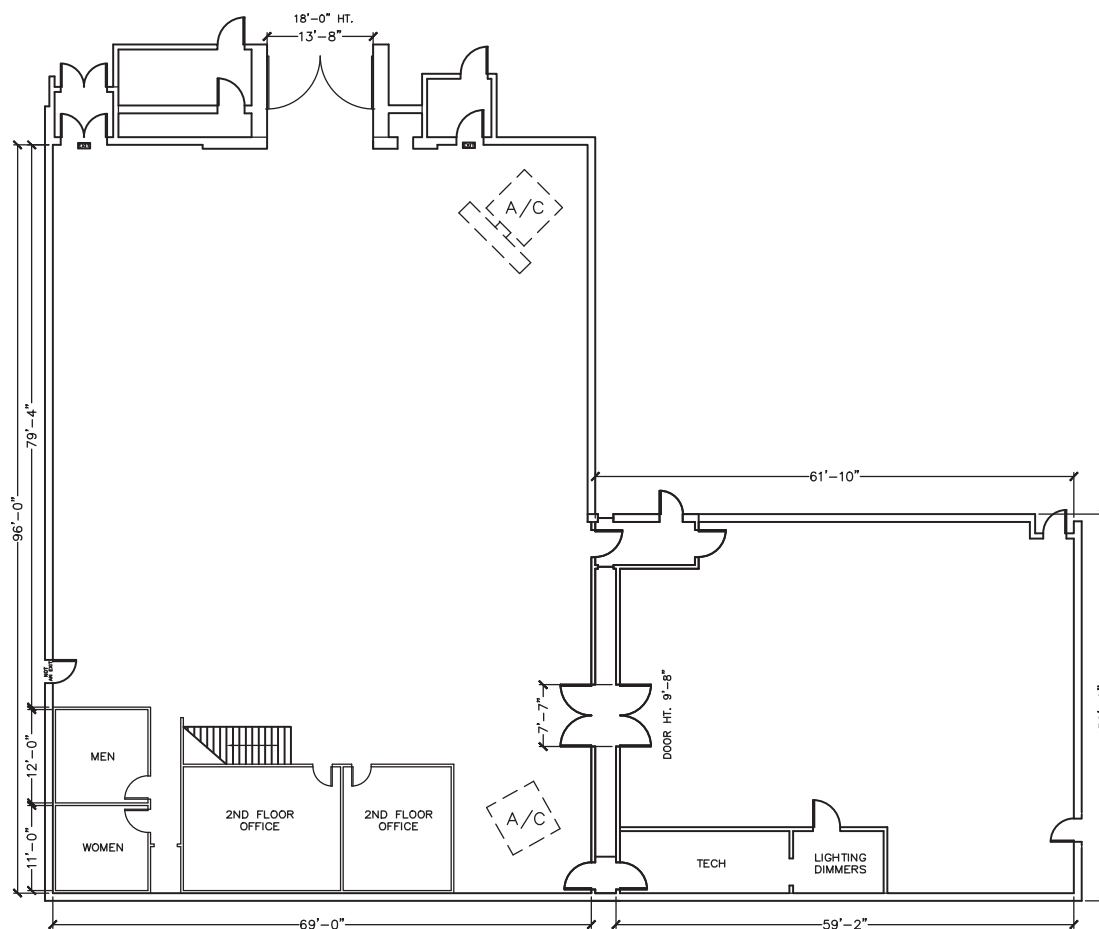


## Stage 2 & 2A



2

Width	Length	Height (Perms)	Total Stage Square Footage	Floor Type	Door (WxH)
69'	79'4"	24'	6,706	Wood	13'8" X 18'

2A

Width	Length	Height (Perms)	Total Stage Square Footage	Floor Type	Door (WxH)
60'	50'	20'	2,826	Wood	7'7" X 9'8"

# Stage Specifications: Stage 2 & 2A



## Stage Specifications (Stage 2)

Width – 69'  
Length – 79'4"  
Height – 24'  
Total Square Footage – 6,706 SF  
Floor – Wood over slab  
Elephant Door (W X H) – 13'8" X 18'

## Stage Specifications (Stage 2A)

Width – 60'  
Length – 50'  
Height – 20'  
Total Square Footage – 2,826 SF  
Floor – Wood over slab  
Elephant Door (W X H) – 7'7" X 9'8"  
Ventilation - Yes

## Additional Info

Audience Rated – 250 + crew of 49; A3 rating  
Drive-In – Yes  
Cat Walks – Yes

## Support Space

Control Room Connectivity – Yes; SMPTE fiber & audio break-outs/tech power  
Kitchen on stage with fridge, stove  
Dressing Rooms, Wardrobe, and Hair + Make Up rooms are available in adjacent buildings

## Heavy Equipment

Stage Management to authorize

## Electric Service

Production Power – 2 switchable buss bars 120/208v @ 3 phase 800 amps per phase 4800 total amps  
240 Volts – No  
480 Volts – No  
Tech Power – Available  
Power In Grid – No

## HVAC

80 tons  
Redlight Control – Yes  
Ventilation – No  
Heating – No

## Stage Extras

Hose Bib – Yes  
Gas – Yes  
Drain – No  
Compressed Air – Yes  
Wireless Internet – Available  
Phone – Available  
Fax – Available