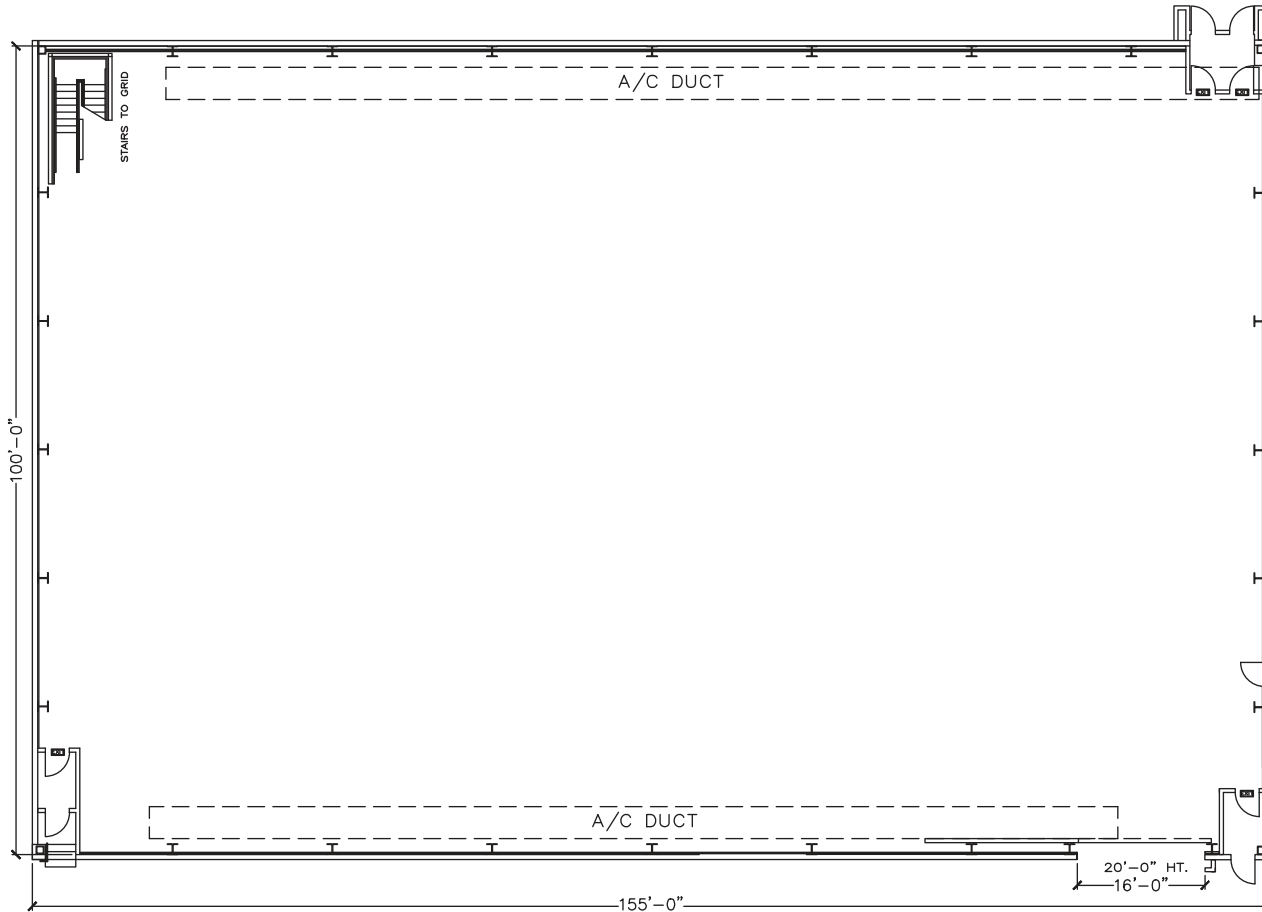


Stage 10



Width	Length	Height (Perms)	Total Stage Square Footage	Floor Type	Door (WxH)
100'	155'	35'	15,822	Wood	16' X 20'

Stage Specifications: Stage 10



Stage Specifications

Width – 100'
Length – 155'
Height (Perms) – 35'
Total Square Footage – 15,822 SF
Floor – Wood over slab
Elephant Door (W X H) – 16' X 20'

Additional Info

Audience Rated – 250 + crew
Drive-In – Yes
Cat Walks – Yes

Support Space

Control Room Connectivity – Yes; video capable, isolated tech power
Dressing Rooms, Wardrobe, and Hair + Make Up rooms are available in adjacent buildings

Heavy Equipment

Stage Management to authorize

Electric Service

Production Power – 3 - switchable buss bars, 120/208 volts @ 3 phase, 800 amps per phase 7200 total amps
Tech Power – Available
Power In Grid – Available

HVAC

160 tons
Redlight Control – Yes
Ventilation – Yes
Heating – Yes

Stage Extras

Hose Bib – Yes
Gas – Yes
Drain – Yes
Compressed Air – Yes
Wireless Internet – Available
Phone – Available
Fax – Available