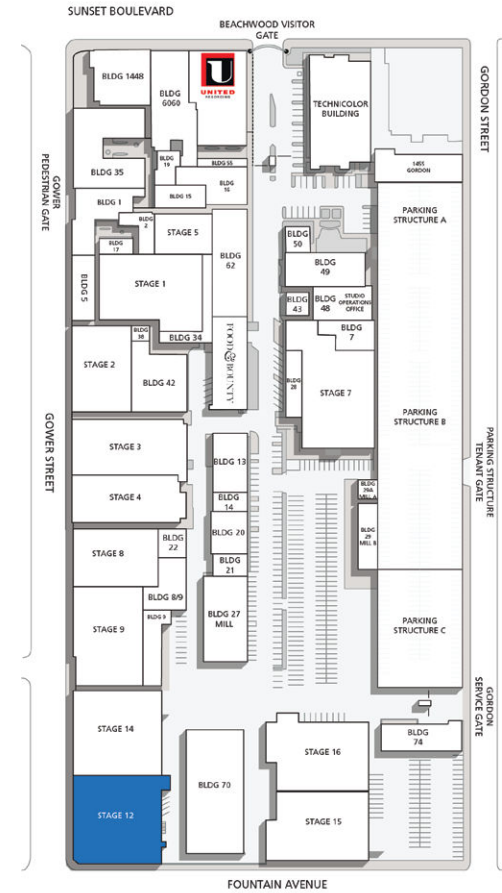
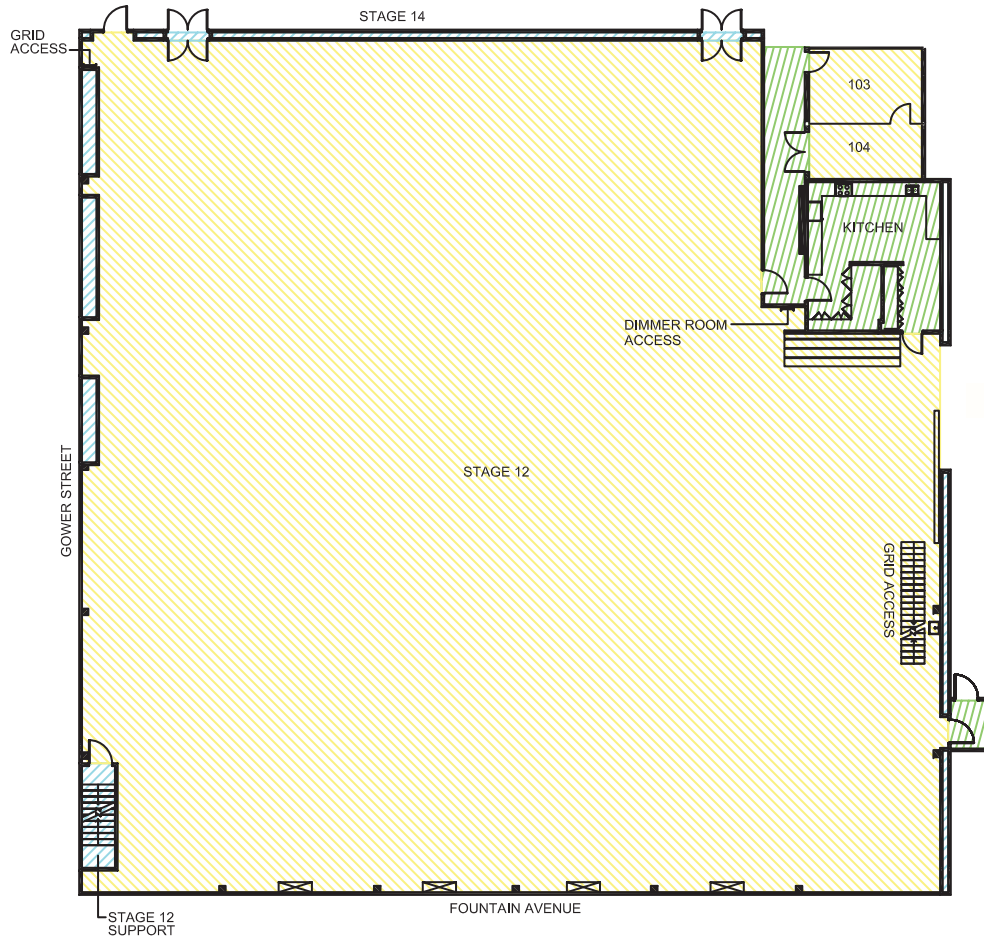
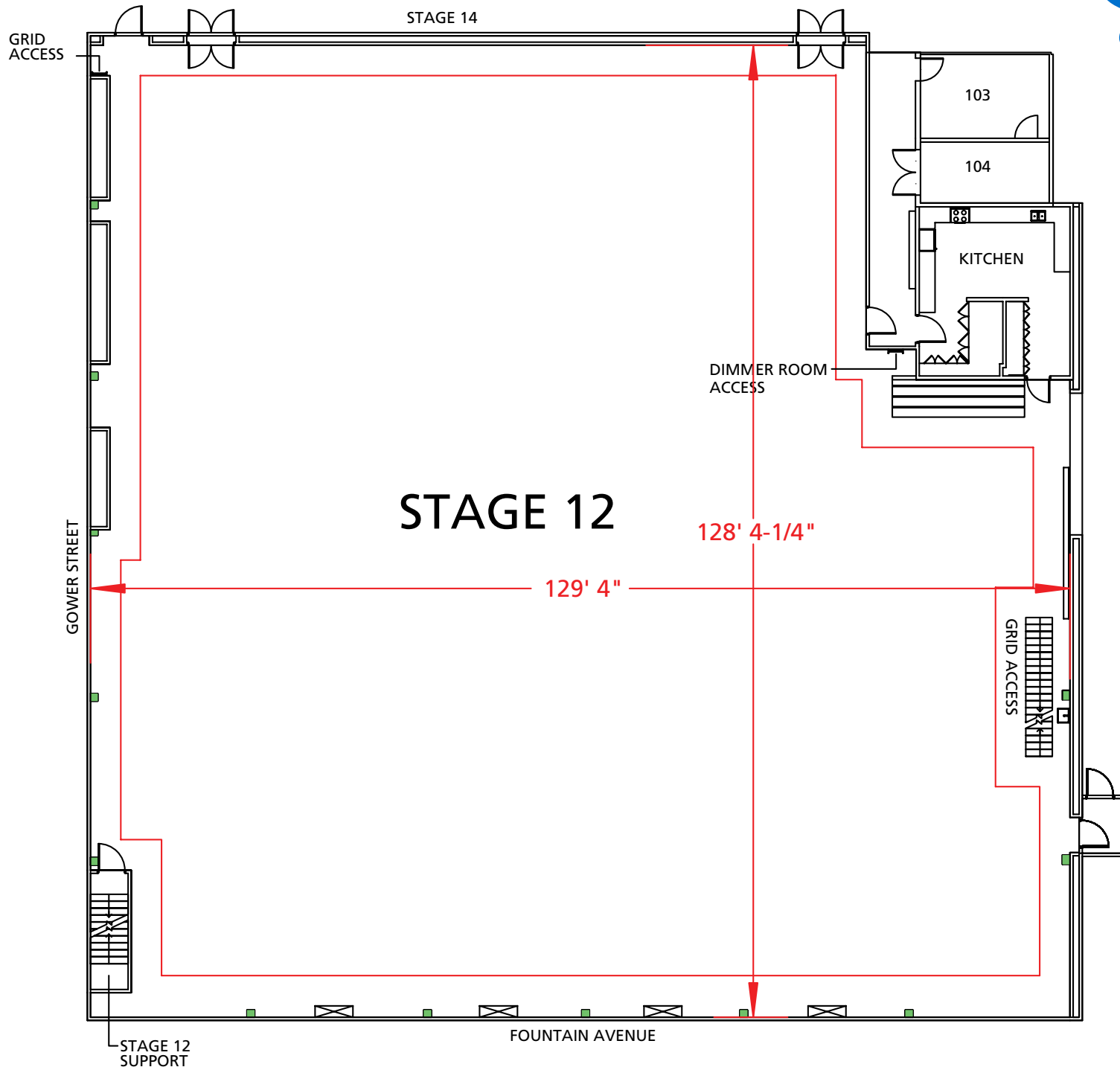


Stage 12



| Width | Length | Height (Perms) | Total Stage Square Footage | Floor Type | Door (WxH) |
|--------|--------|----------------|----------------------------|------------|---------------|
| 129'4" | 128'4" | 35'3" | 15,982 | Wood | 17' 11" x 20' |



Stage Specifications: Stage 12

Stage Specifications - (Dimensions Include 4' Fire Lane)

Width – 129' 4"

Length – 128' 4"

Height (Perms) – 35' 3"

Total Square Footage – 15,982

Floor Type – Wood

Elephant Door (W X H) – 17' 11" x 20'

NOTE Stage 12 is connected to Stage 14 via two pass-thru standard double doors

Support Space- (Available On Stage)

Offices – 2

Kitchen on stage with stove.

Dressing Rooms, Wardrobe, and Hair + Make Up rooms are available in adjacent buildings

Heavy Equipment

Stage Management to authorize

Electric Service

Production Power - 120/208 800 Amp Per Phase Bus Bar, 4800 Amp Total Standard; Additional 2400 amp service available

240 Volts - No

480 Volts - No

Tech Power - Available

Power In Grid - Available

HVAC

HVAC- (3) 30 Ton Cooling / Heat Package Unit

Redlight Control - Yes

Ventilation - Yes

Heating - Yes

Stage Extras

Hose Bib - No

Gas - No

Drain - Yes

Compressed Air - No

Wireless Internet – Available

Phone – Available

Fax – Available