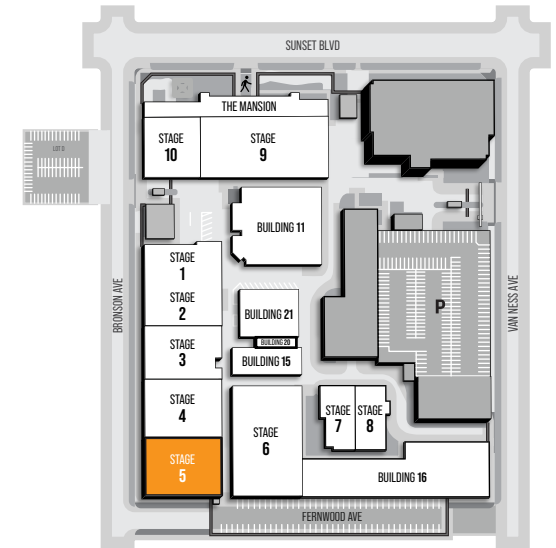
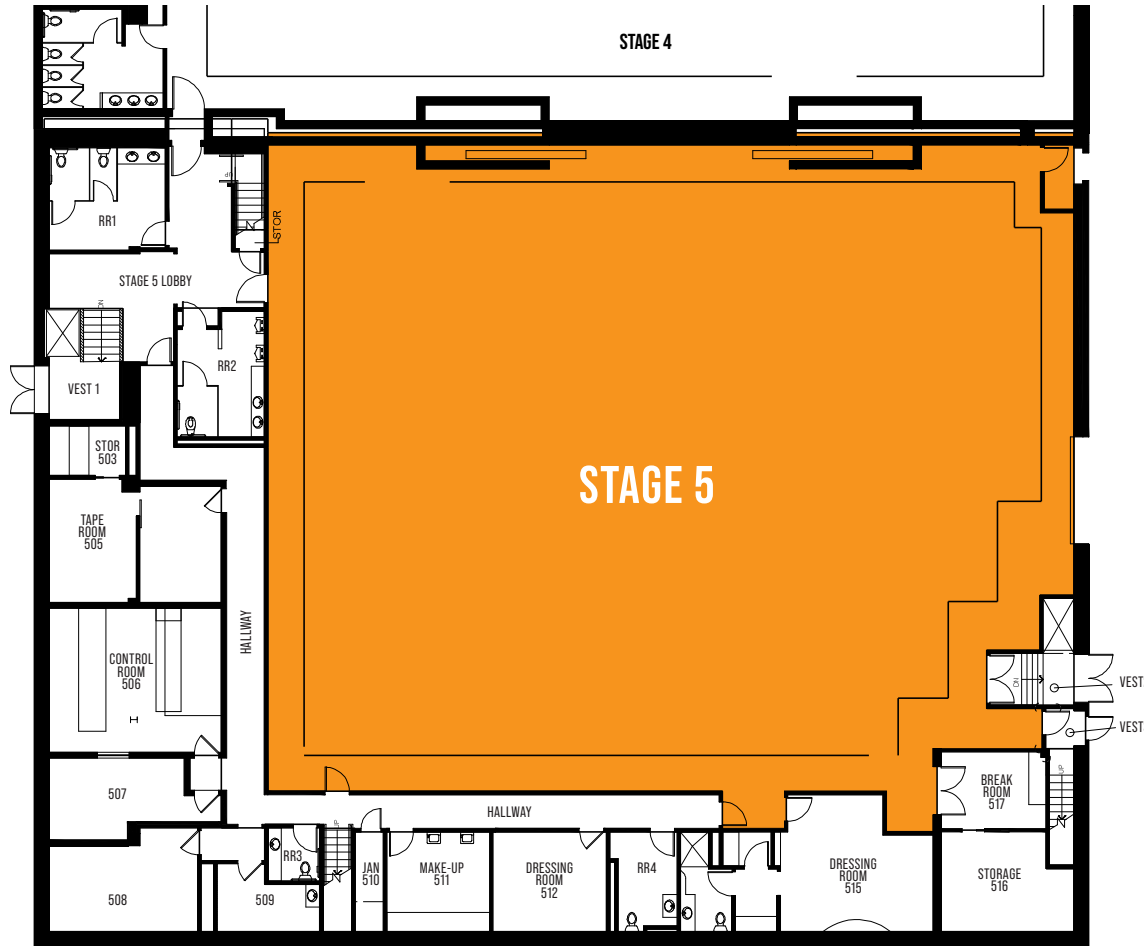




SUNSET BRONSON STUDIOS • STAGE 5

5800 Sunset Blvd, Los Angeles, CA 90028 • Sales@SunsetStudios.com • (323) 860-8100



WIDTH	LENGTH	HEIGHT	TOTAL STAGE SQUARE FOOTAGE	FLOOR TYPE	DOOR (WxH)
79'11"	101'11"	30'6"	9,867	WOOD	13'X 17'

*Dimensions are for overall stage size and do not take into account stage irregularities. Production company representative should verify dimensions for particular applications.



SUNSET BRONSON STUDIOS • STAGE 5

5800 Sunset Blvd, Los Angeles, CA 90028 • Sales@SunsetStudios.com • (323) 860-8100

STAGE SPECIFICATIONS

Width - 79'11"

Length - 101'11"

Height - 30'

Fire Lane - 4'

Total Square Footage - 9,867

Elephant Door - 13' x 17'

Floor Type - Wood

POWER

9600 total amps, 3 phase switches, 800 amps per phase

240 Volts - No • 480 Volts - No

Power In Grid - Available (single phase 120/208)

Tech Power - Available

HVAC

HVAC - Fully Self Contained (75 ton cooling capacity) package

Acoustic Rating - NC 25

Redlight Control - Yes

Ventilation - Yes

Heating - Yes

STAGE EXTRAS

Hose Bib - No

Gas - No

Drain - No

Compressed Air - No

ATTACHED SUPPORT SPACE - Yes