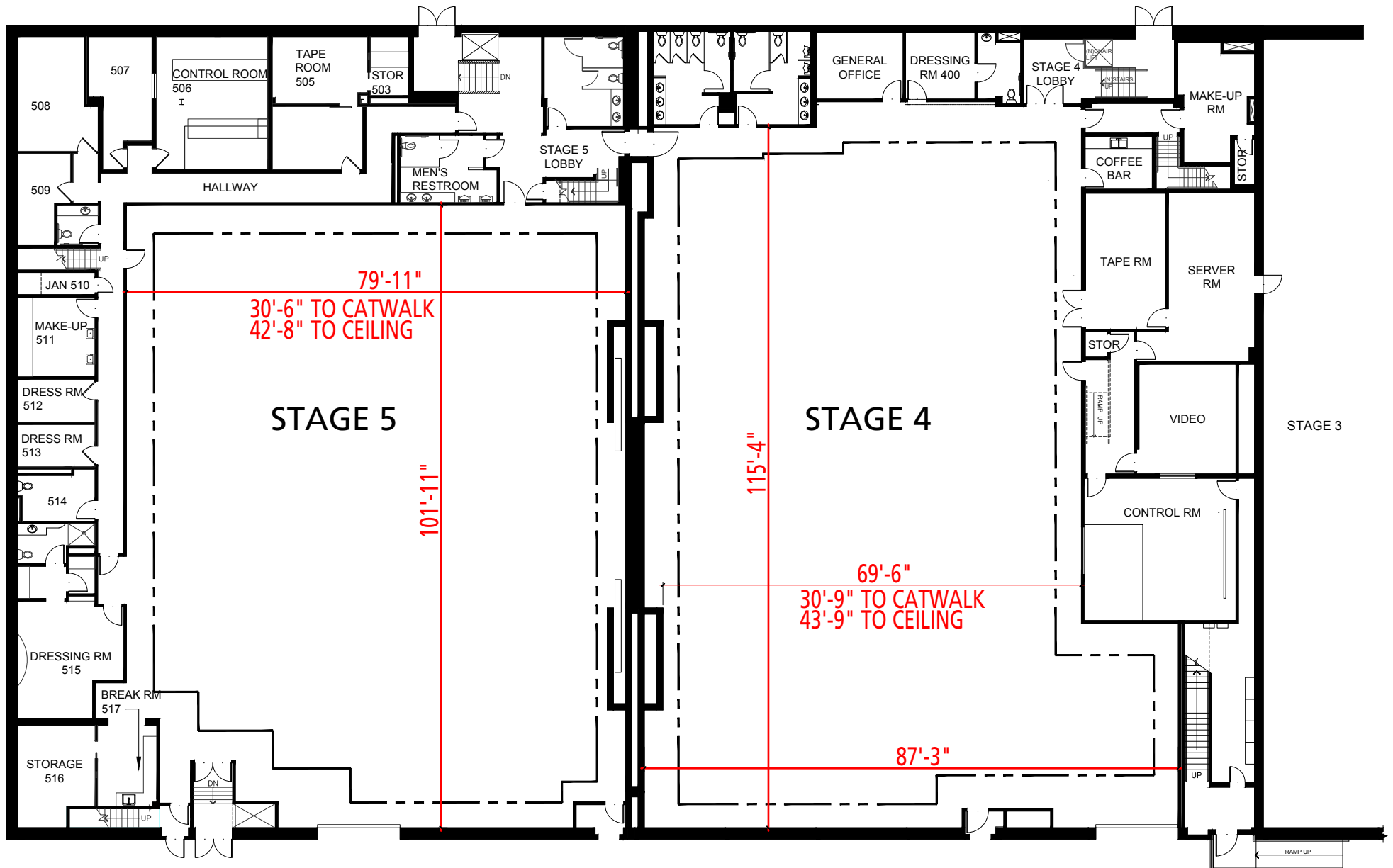


Width	Length	Height (Perms)	Total Stage Square Footage	Floor Type	Door (WxH)
87' 3"	115' 4"	30' 9"	9,932	Wood	13'5" x 18'8"



# Stage Specifications: Stage 4

## Stage Specifications - (Dimensions Include 4' Fire Lane)

Width – 87' 3"  
Length – 115' 4"  
Height (Perms) – 30'9"  
Total Square Footage – 9,933 sf  
Floor Type – Wood  
Elephant Door (W X H) – 13' 5" X 18' 8"  
Full Service Control Room Available On Stage

## Support Space- (Available On Stage)

Offices - 3  
Dressing Rooms - 5  
Make Up Rooms - 1  
Wardrobe - 0  
Greenrooms – 1  
Galley - 2

## Heavy Equipment

Stage Management to authorize

## Electric Service

Production Power - 120/208 800 Amp Per Phase Bus Bar, 2400 Amp Total Standard. Additional 7200 Amps Available  
240 Volts - Accessible  
480 Volts - Accessible  
Tech Power- Available  
Power In Grid - Available (Single Phase 120/208)

## HVAC

HVAC- (3) 20 Ton (Nominal) Cooling Only Package Units.  
Redlight Control - Yes  
Ventilation - No  
Heating – No

## Stage Extras

Hose Bib - Yes  
Gas - No; Compressed Air - No  
Drain - Yes  
Wireless Internet – Yes  
Phone – Yes; Fax – No