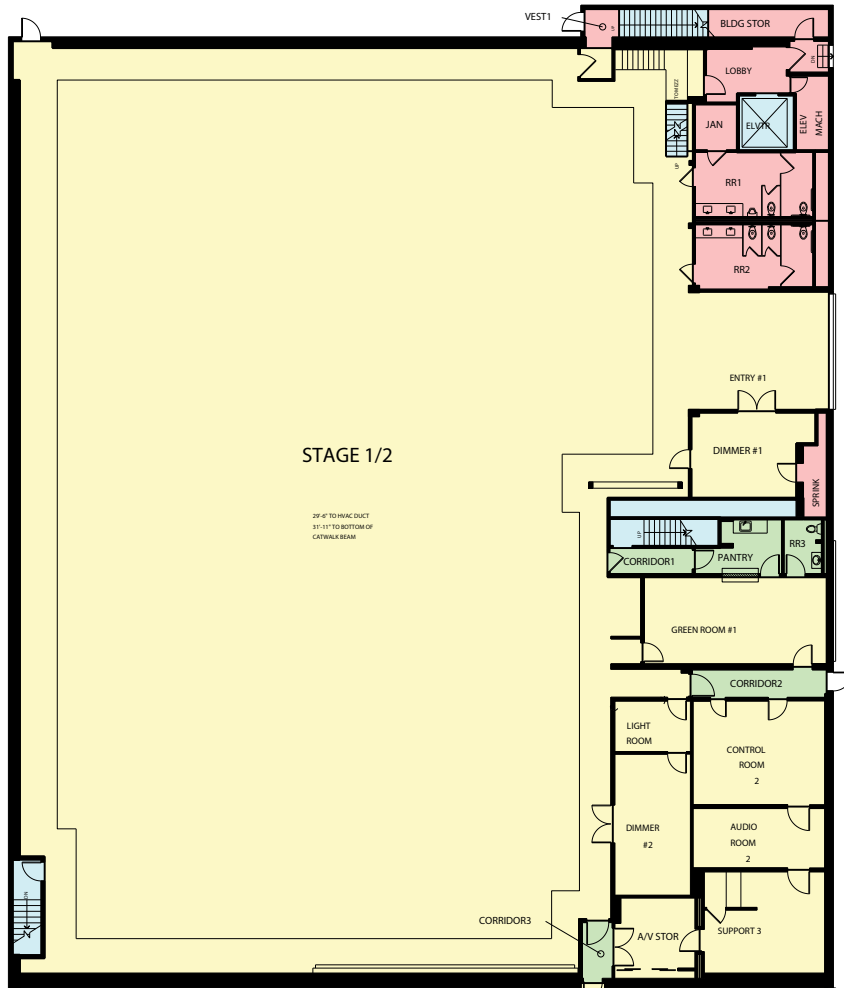
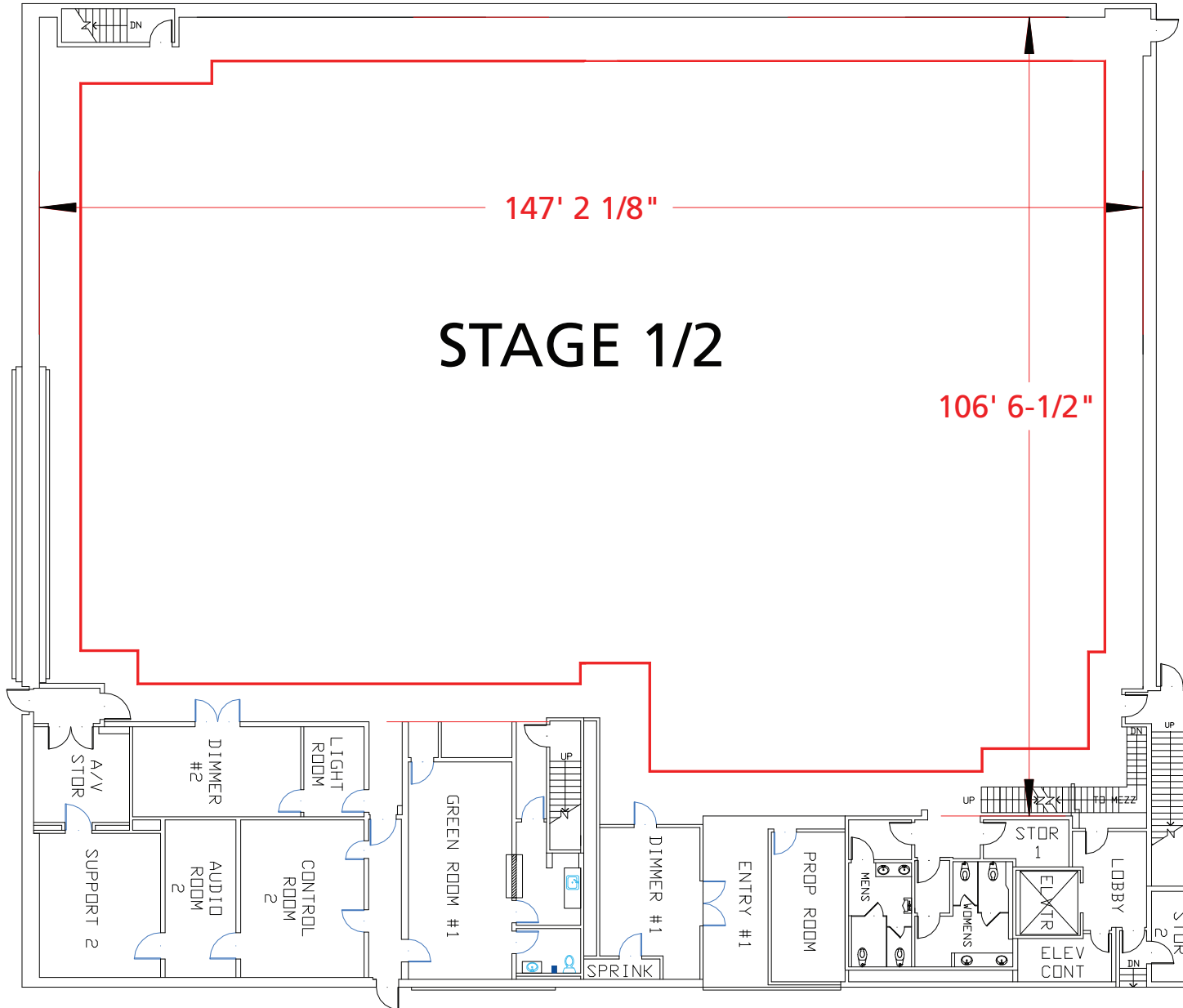


Stage 1/2



| Width | Length | Height (Perms) | Total Stage Square Footage | Floor Type | Door (WxH) | Gross Weight Limit |
|-------------|-------------|----------------|----------------------------|------------|----------------|--------------------|
| 147' 2 1/8" | 106' 6 1/2" | 30' | 18,252 | Wood | 18'10" x 16'4" | 12,000 Lbs. |

*Dimensions are for overall stage size and do not take into account stage irregularities. Production company representative should verify dimensions for particular applications.



*Dimensions are for overall stage size and do not take into account stage irregularities. Production company representative should verify dimensions for particular applications.

Stage Specifications: Stage 1/2

Stage Specifications - (Dimensions Include 4' Fire Lane)

Width – 147' 2 1/8"

Length – 106' 6 1/2"

Height (Perms) – 30'

Total Square Footage – 19,060 sf

Floor Type – Wood

Elephant Door (W X H) – 18' 10" X 16' 4"

Gross Weight Limits - 12,000 lbs (No Load)

Full Service Control / Audio / Video Tape Room Available

Support Space- (Available On Stage)

Offices – 1

Dressing Rooms – 9

Make Up Rooms – 1

Wardrobe - 1

Greenrooms – 1 (2 Additional Upon Availability)

Galley - 1

Heavy Equipment – (Authorized Lifts)

32' Scissor – 3246ES

30' Articulating Boom – E300AJP

40' Articulation Boom – E400AJP

Electric Service

Production Power - 120/208 800 Amp Per Phase Bus Bar, 2400 amp total standard. Additional 7200 Amps Available

240 Volts – Accessible

480 Volts – No

Tech Power – Available

Power In Grid – Available (Single Phase 120/208)

HVAC

HVAC- (3) 20 Ton (Nominal) Cooling Only Package Units.

Redlight Control – Yes

Ventilation – No

Heating – No

Stage Extras

Hose Bib – Yes

Gas – Yes ; Compressed Air – No

Drain – Yes

Wireless Internet – Yes; Phone – Yes; Fax – No